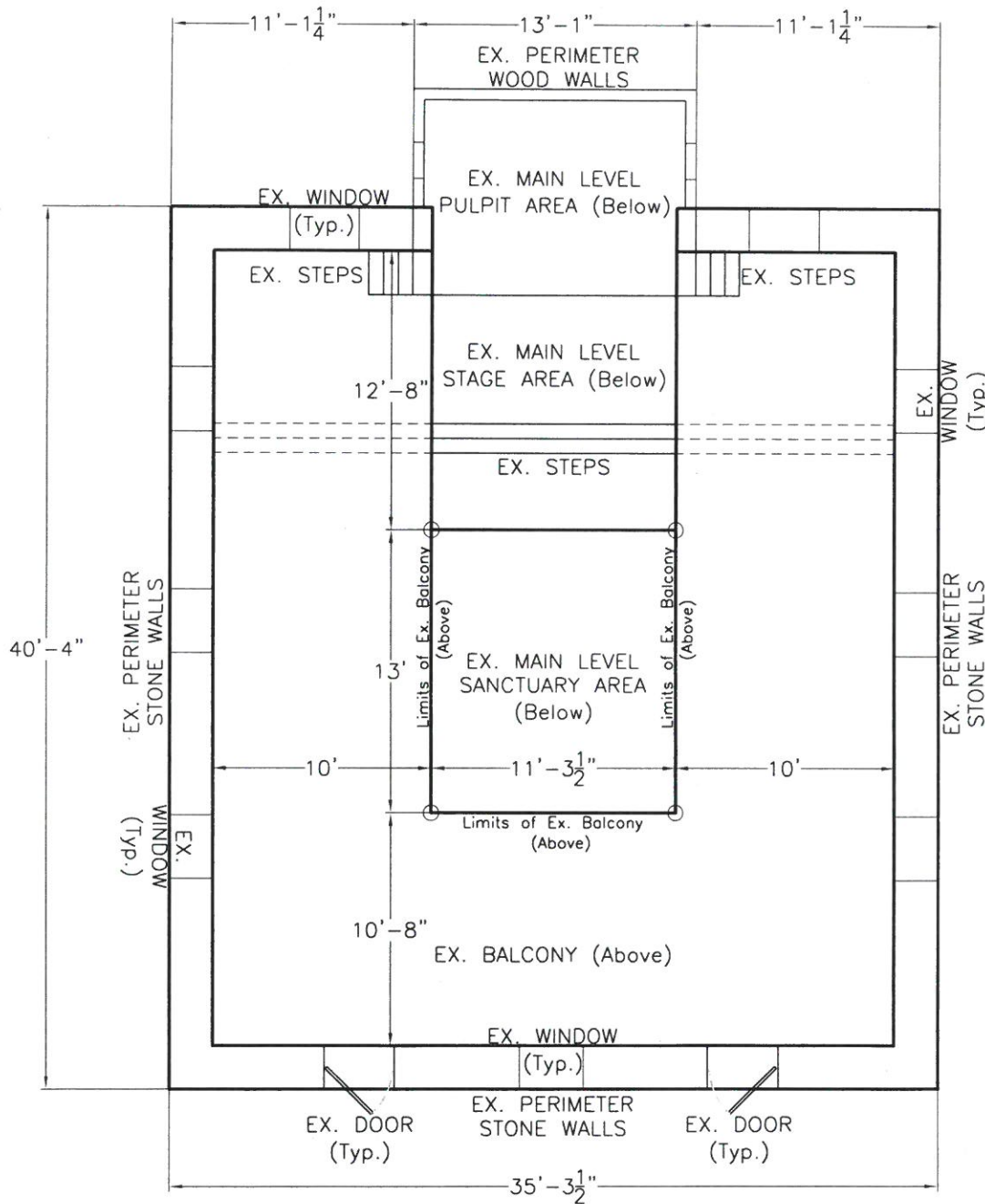


TOWN OF MIDDLEBURG, VIRGINIA  
 P. O. BOX 187  
 MIDDLEBURG, VIRGINIA 20118  
 (540) 687-5152

PROJECT:  
 ASBURY CHURCH  
 105 NORTH JAY STREET  
 MIDDLEBURG, VIRGINIA



NOTE: ALL DIMENSIONS ARE APPROXIMATE AND FOR GENERAL REFERENCE ONLY

MAIN LEVEL & BALCONY PLAN

PAINTER-LEWIS, P.L.C. Consulting Engineers  
 817 CEDAR CREEK GRADE, SUITE 120  
 WINCHESTER, VIRGINIA 22601 (540) 662-5792

DATE: 07-23-15  
 SCALE: 1/8"=1'-0"  
 PLATE: PLAN-2

P-L, PLC No.: 1505001